

Brain health : the new frontier in natural health products

EXCLUSIVELY FROM IMMUNOTEC

NEW!

COGNIVA™

with **SYNA-PS₅₀**™







*Now, you can
chew your way to
brain health!*

Helps temporarily improve cognitive performance

Environmental toxins, information overload, stress, and the aging process may all impact our brains, affecting memory, alertness, focus, and overall cognitive performance. This is why you need COGNIVA, an innovative nootropic “smart chew” exclusively from Immunotec with SYNA-PS₅₀, our proprietary blend of scientifically researched ingredients containing phosphatidylserine (PS).

Benefits

-  Helps temporarily improve overall cognitive performance
-  Helps temporarily improve alertness and concentration
-  Provides a quick boost of focus and mental sharpness
-  Helps support long-term brain health and short-term memory

Cogniva has been granted Natural Product Number (NPN) 80073745 by Health Canada.

Connections count!

Our brain contains billions of neurons which communicate with each other through trillions of connections called **synapses**.



Healthy connections ensure
your best cognitive performance.

Clarity. Concentration. Confidence. Cogniva.

SYNA-PS⁵⁰™ is Immunotec's unique and proprietary blend of scientifically researched ingredients, formulated with:

- ⊕ **Phosphatidylserine (PS)** has been studied extensively for its role in memory and cognition
- ⊕ **Chromium** increases brain glucose transporters, providing neural energy
- ⊕ **Vanadium** is an essential micronutrient for normal neurochemical metabolism
- ⊕ **Choline** is a critical component of brain cell membranes and neurotransmitters
- ⊕ **Boron** is a trace element involved in neuronal energy utilization

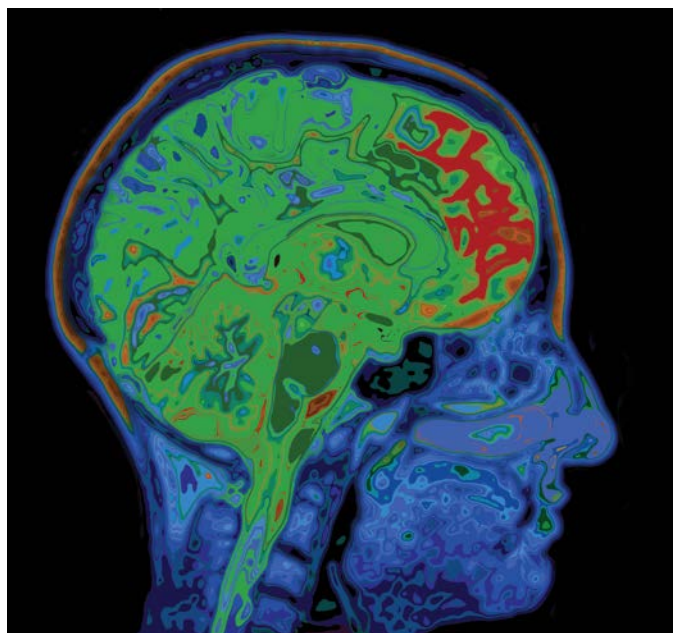
Other key ingredients include:

Methyl Folate is the active form of natural folate involved in the production of neurotransmitters

Methylcobalamin (vitamin B12) is a highly active form of B12 which supports healthy epigenetic regulation

Green Tea Isolate provides natural caffeine that is micro-encapsulated for a gentler and longer effect than synthetic caffeine

**Cogniva is vegan,
gluten-free,
and contains
no artificial
sweeteners or
preservatives.**



In this MRI, red indicates the brain area responsible for cognition

Who needs Cogniva?

- ⊕ Students, for improved focus and learning
- ⊕ Adults, to help cope with a hectic lifestyle
- ⊕ The elderly, for memory support

"In recent years, so much attention has been paid toward preserving and salvaging brain function in all age groups. This is why 'nootropics' (also called cognitive enhancers) were developed, and are rapidly becoming mainstream."

Dr. Jimmy Gutman, Senior Medical Advisor

Your Independent Immunotec Consultant is

Each delicious, natural fruit-flavoured Cogniva chew is individually wrapped for convenient, once-a-day consumption. There are 30 smart chews, one for each day of the month, in a resealable foil bag to ensure long-term freshness.